

Fair Lawn Friends of Music Association, Inc.
14-00 Berdan Avenue
Fair Lawn, NJ 07410

August 2008

FRIENDS OF MUSIC – INTEREST FINDER

Student's Name: _____ Grade: _____

Parent(s) Name: _____

Street Address: _____

Phone Number: _____ e-mail: _____

Please indicate the program(s) that your child participates in:

_____ **Marching Band** _____ **Wind Ensemble** _____ **Orchestra**

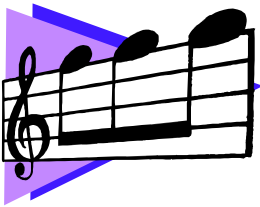
_____ **Color Guard** _____ **Symphonic Band** _____ **Jazz Ensemble**

Parent volunteers are needed to act as a Committee Chairperson for Friends of Music fund-raising events scheduled for the 2008/2009 school year.

In order to get a jump-start on the new season, our Chairperson Interest Finder is being sent out early to all parents of Instrumental Music, Marching Band and Color Guard students.

Chairperson: A chairperson is responsible for organizing the committee or event/fund-raiser for the Friends of Music. You may sign up for more than one committee chair position, however, in most cases you may only need to chair one committee.

Our Calendar of Events will be discussed in greater detail during our **summer meeting on August 14, 2008 at 7:30 PM, as well as our first Friends of Music monthly meeting in September.**



The following committee chairpersons and volunteers for miscellaneous activities still need to be established for the 2008/2009 school year.

<u>Check</u>	<u>Event – Chairperson/Volunteers</u>
_____	Hospitality (organize band dinners during marching band season)
_____	NY Giants Football Raffle
_____	Mums
_____	Monthly Bake Sale
_____	Winter Concert Concession
_____	Winter Tag Day (requires 2 people)
_____	Spring Concert Concession 1
_____	Spring Concert Concession 2
_____	Spring Tag Day (requires 2 people)
_____	EcoPhones Fundraiser (year long collection)
_____	Pasta Dinner
_____	Super 50/50 Raffle
_____	Dining To Donate Night
_____	Celebrity Scoop Night

Miscellaneous Activities: (more announced at monthly meetings)

_____	FOM Football Game Table (sell various items at home games)
_____	Donate items for Bake Sales or Concessions
_____	Bake Sale Worker (after school 2:15 – 3:00)
_____	Clothing Drive Volunteer
_____	Winter Concert Concession Worker
_____	Spring Concert Concession Worker
_____	Roadie Crew Member (Marching Band at football games & competitions)

PLEASE MAIL YOUR INTEREST FINDER NO LATER THAN AUGUST 18, 2008 TO:

Friends of Music, c/o Kathleen Echevarria, 3-09 32nd Street, Fair Lawn, New Jersey 07410

Or bring this to the Band Camp Meeting on August 14th.